

# Anatomy & Physiology 2

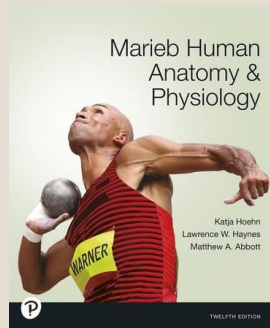
Fall 2025; 2<sup>nd</sup> 8 weeks

Instructor: Amanda Rakhshandeh, PhD

## Required Materials:

### Textbook

- E-text included in tuition fees
- Available on first day of class
- You can opt out. See Blackboard for more info.



### Note-taking & Study Guide

- Download & print for free

**BIOLOGY 2402: ANATOMY & PHYSIOLOGY 2**  
**SOUTH PLAINS COLLEGE**

### NOTE-TAKING & STUDY GUIDES

copyright © Amanda R. Rakhshandeh, PhD

### External Webcam

- Check out from SPC library OR
- Purchase on your own
- Typical cost - \$20 - \$30



Scan for SPC library  
contact info



## Where & when do we meet?



Mondays through  
Thursdays

9:30 AM to 12 PM

Science Building  
Room 181

**Plan to meet**  
**every day for the**  
**entire time.**

## How do I contact you?

Drop by:



M/T/W/Th; 12:30 – 2  
F: 10 – 1

Science Building  
Room 135

Call me:  
806.716.2317



Email me:  
[arakshandeh@southplainscollege.edu](mailto:arakshandeh@southplainscollege.edu)



I reply by the next  
business day.

• 10/20: First  
day of class



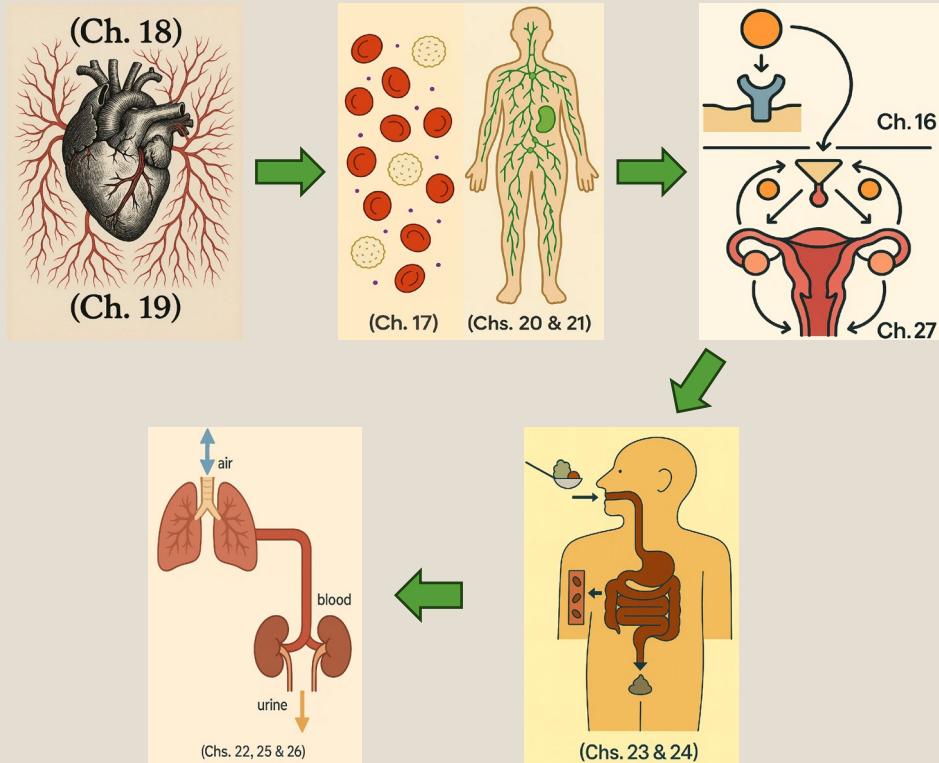
• 10/27: Last  
day to drop without  
it showing on your  
transcript

• 11/26 – 28: no class;  
Thanksgiving

• 12/4: Last day to  
drop with a "W"

# What will we learn in this class?

## Topics Covered



### Questions to ask yourself ...



How does the shape of a body part cause it to function in a specific way?

What new functions can be seen once different anatomical structures begin working together?

How do different parts of the body sense their environment? How do they then respond?

How do different parts of the body obtain and use energy?

How do biologists describe the body to one another?

How are different biological structures & functions similar? How are they different?

*Life can impact learning!*



**A student can get help with:**

- Food assistance
- Help paying bills
- Mental health counseling and referrals
- Other free or reduced cost programs

Contact the SPC Health & Wellness Center today.

<https://www.southplaincollege.edu/health/studenthealth.php>



### CAR BROKE DOWN?



### NEED A SHUTTLE?



**GET HELP GETTING TO CLASS TODAY**

<https://spartanpublictransit.com/spc-express.php>



# What are the assignments for this class?

## Lecture Exams

- Five exams test physiology and “mental maps” of structures.
- Two exams divided into: 1) memorization (online) and 2) critical thinking (in class with learning aids)
- One extension allowed, no retakes.
- Optional final can replace lowest grade.

## Lab Exams

- Six exams test identification of anatomical structures.
- Fill-in-the-blank, no word bank, spelling counts. Cat practical is an oral, group exam.
- One extension allowed, no re-takes.
- Optional final can replace lowest grade.

## Before-Class Videos

- Fill out note-taking guide as you watch videos and answer graded questions (two chances).
- Submit questions at the end of each video.
- No extensions or re-takes; lowest five grades dropped.

## Orientation Assignments

- Start-here tasks to learn course setup.
- Chapter 18 quizzes/tutorials are required. The rest are optional.
- No extensions or re-takes; lowest one grade dropped.

## Attendance

- Be on time, fully participate, stay to the end.
- Lowest one grade dropped.

## How much are assignments worth?

- Lecture Exams 70%
- Lab Exams: 20%
- Videos: 4%
- Quizzes: 4%
- Attendance: 2%

## Do you offer extra credit?

No. However, early Start Here assignments boost your grade – don't skip them!

## How do you assign grades?

89.5 and up	= A
79.5 – 89.49	= B
69.5 – 79.49	= C
59.5 – 69.49	= D
59.49 and down	= F

## What if I'm on the borderline?

Cut-offs are strict.  
An 89.49 = B  
An 89.50 = A

## Do you curve grades?

No, but all exams are reviewed for accuracy and fill-in-the-blank questions are hand-graded.

# How do I succeed in this class?

## Spend enough time studying outside of class.

- 16-week classes = 12 hours a week
- 8-week classes = 20 hours a week
- 5-week classes = 30 hours a week



## Take notes while watching videos *before class.*

- Pause often.
- Details matter, so write them down.
- Write down questions

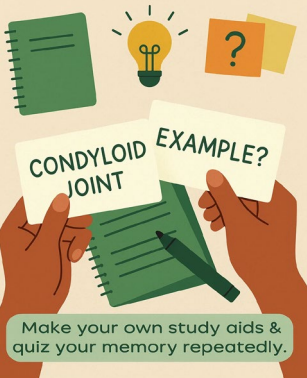


## Ask questions.

- At the end of the video lesson,
- In class,
- See me during office hours.



## BOOST YOUR MEMORY



Make your own study aids & quiz your memory repeatedly.

## Use the Learning Tools I Provide



Week 1

[Edit release conditions](#)

Learning Aids for Heart & Blood Vessels  
 Visible to students

Learning Aids for noat  
 Release conditions [Edit release conditions](#)

Due Tuesday, March 11 at 11:59PM  
 Release conditions [Edit release conditions](#)

Due Wednesday, March 12 at 11:59 PM  
 Release conditions [Edit release conditions](#)

Due Friday, March 14 at 11:59 PM  
 Release conditions [Edit release conditions](#)

## Which learning tools are used most often?

YouTube channel:  
Re-watch course videos any time.

Note-taking guide:  
Structure your notes & know when you miss something important.

Lecture exam reviews: Lists topics for the exams. All topics match some part of the Note-taking guide.

Practical exam "terms to know"

Mock quizzes:  
Preview exam format and adjust study habits.

Online tutorials:  
Check your note-taking guide, & quiz your memory.

Instructor-made flash cards: Contains all structures that could be seen on the practical exams.

Hands-on Models – Available at SPC campuses for in-person practice.

Tutoring – Free SPC tutors.



More tools in Course Resources on Blackboard.

# What are your other policies?

## Attendance

- I may drop you after you miss two days.
- If I drop you, you will receive a grade of "X", rather than "W".
- If you decide to stop attending class, it is your responsibility to drop this course and verify that you are no longer enrolled.

## Major exam protocols

- Most are given online using HonorLock and an external webcam.
- You must show official picture identification.
- Blackboard lists exam conduct requirements, as well as consequences for violations.
- Consequences for violating exam protocol will be suspended on the prior knowledge quiz, so that I can help you correct honest mistakes.
- *Immediately* visit HonorLock support for technical difficulties. If you email me, regularly check your email, in case of a quick reply.

## Cyber or in-person bullying

- Disorderly conduct, verbally abusive or intimidating emails, or subjecting another person to inappropriate, abusive, threatening, or demeaning actions will be subject to disciplinary action, including being required to withdraw from the course.

## Cheating

- Cheating will not be tolerated and is subject to disciplinary action.
- A list of what may be considered cheating is found on Blackboard.

## Other SPC Policies:

For information regarding Intellectual Exchange, Disabilities, Non-Discrimination, Title IX Pregnancy Accommodations, CARE (Campus Assessment, Response, and Evaluation) Team, Campus Concealed Carry, and COVID-19 please use the following link:  
<https://www.southplainscollege.edu/syllabusstatements/>



For the college withdrawal policy, please visit  
<https://www.southplainscollege.edu/admission-aid/apply/schedulechanges.php>



Date		Tentative In-Class Agenda Fall 2 2025
M	Oct 20	Syllabus/The heart (Ch. 18)
T	Oct 21	The heart, continued
W	Oct 22	The heart, continued
Th	Oct 23	The heart, continued
M	Oct 27	Blood vessels (Ch. 19)
T	Oct 28	Blood vessels, continued
W	Oct 29	Blood vessels, continued
Th	Oct 30	Cat dissection
M	Nov 3	Lecture Exam 1 – Critical Thinking
T	Nov 4	Blood (Ch. 17)
W	Nov 5	Blood, con't
Th	Nov 6	Lymphatic system & immunity (Chs. 20 & 21)
M	Nov 10	Lymphatic system & immunity, con't
T	Nov 11	Endocrine system (Ch. 16)
W	Nov 12	Endocrine system, con't
Th	Nov 13	Reproductive system (Ch. 27)
M	Nov 17	Reproductive system, con't
T	Nov 18	Digestive system & nutrition (Chs. 23 & 24)
W	Nov 19	Digestive system & nutrition, con't
Th	Nov 20	Digestive system & nutrition, con't
M	Nov 24	Cat dissection
T	Nov 25	Respiratory system (Ch. 22)
M	Dec 1	Respiratory system, con't
T	Dec 2	Urinary system (Ch. 25)
W	Dec 3	Urinary system, con't
Th	Dec 4	Urinary system, con't
M	Dec 8	Fluid, electrolyte & acid-base balance (Ch. 26)
T	Dec 9	In-class cat practical
W	Dec 10	Lecture Exam 5 – Critical Thinking
Th	Dec 11	<b>Optional comprehensive final exam</b>

**BIOLOGY 2401 TENTATIVE ASSIGNMENTS SCHEDULE FALL 2 2025 – ALL ASSIGNMENTS ARE DUE AT 11:59 PM CST ON THE DATE LISTED, EXCEPT FOR IN-CLASS ASSIGNMENTS. YOU ARE WELCOME TO WORK AHEAD AT ANY TIME!**

Due Date	Week 1 assignments	Special Instructions	Done?
M – Oct 20	Chapter 18 videos (#1 through 5 & 7)	---	
	Orientation Videos (#1 through 4)	---	
	Study Schedule	---	
	Video: scanning when testing	---	
	Email quiz	---	
	The Am I Ready? Quiz	---	
	Student learning survey	---	
	Prior knowledge quiz	<b>Online with an external webcam</b>	
T – Oct 21	Chapter 18 videos (# 6, 8, 9 & 11)	---	
W – Oct 22	Chapter 18 video (#10)	---	
F – Oct 24	Chapter 18 lab quiz & quiz, Chapter 18 tutorials	---	

Due Date	Week 2 assignments	Special Instructions	Done?
Sun– Oct 26	Chapter 19 videos (#1 through 5)	---	
M – Oct 27	Chapter 19 videos (#6 through 8)	---	
Th – Oct 30	<b>Cat Dissection</b>	<b>Must be present in class for credit</b>	

Due Date	Week 3 assignments	Special Instructions	Done?
Sun – Nov 2	Lab practical 1 (Chs. 18 & 19)	Online with an external webcam	
	Lecture exam 1 – Memorization portion (Chs. 18 & 19)	Online with an external webcam	
M – Nov 3	Lecture exam 1 – Critical Thinking portion (Chs. 18 & 19)	In class using approved learning aids	
	Chapter 17 videos (#1 through 7)	---	
T – Nov 4	Chapter 17 videos (#8, 9 & 10)	---	
W – Nov 5	Chapter 20 & 21 videos (#1 through 4)	---	

Due Date	Week 4 assignments	Special Instructions	Done?
Sun– Nov 9	Chapters 20 & 21 videos (#5 through 9)	---	
M – Nov 10	Chapter 16 videos (#1 through 6)	---	
W – Nov 12	Chapter 27 videos (#1 through 6)	---	
Sat – Nov 15	Lab practical 2 (Chs. 17 & 20)	Online with an external webcam	
	Lecture exam 2 (Chs. 17 & 20)	Online with an external webcam	

Due Date	Week 5 assignments	Special Instructions	Done?
Sun– Nov 16	Chapter 27 videos (#7 through 10)	---	
M – Nov 17	Chapter 23 videos (#1 through 10)	---	
T – Nov 18	Chapter 23 videos (#11 through 14)	---	
W – Nov 19	Chapter 24 videos (#1 through 6)	---	
Sat– Nov 22	Lecture exam 3 (Chs. 16 & 27)	Online with an external webcam	
	Lab practical 3 (Chs. 16 & 27)	Online with an external webcam	

Due Date	Week 6 assignments	Special Instructions	Done?
M – Nov 24	In-class evaluation – cat dissection	Must be present in class for credit	
	Chapter 22 videos (#1 through 11)	---	
Sat– Nov 29	Lab practical 4 (Ch. 23)	Online with an external webcam	
	Lecture exam 4 (Chs. 23 & 24)	Online with an external webcam	

Due Date	Week 7 assignments	Special Instructions	Done?
Sun–Nov 30	Chapter 22 videos (#12 through 15)	---	
M – Dec 1	Chapter 25 videos (#1 through 7)	---	
T – Dec 2	Chapter 25 videos (#8 through 11)	---	
W – Dec 3	Chapter 26 videos (#1 through 7)	---	

Due Date	Week 8 assignments	Special Instructions	Done?
Sun – Dec 7	Chapter 26 video (#8)	---	
T – Dec 9	In-class cat practical examination	Must be present in class for credit	
	Lecture exam 5 – Memorization portion (Chs. 22, 25 & 26)	Online with an external webcam	
W – Dec 10	Lab practical 5 (Chs. 22 & 25)	Online with an external webcam	
	Lecture exam 5 – Critical thinking (Chs. 22, 25 & 26)	In class using approved learning aids	
Th – Dec 11	Optional comprehensive final lecture exam	In class, no learning aids	
	Optional comprehensive final practical exam	In class, no learning aids	

*The instructor reserves the right to make changes to this schedule as necessary.*